

# Connecting to Guest – Windows XP SP2+

2009 - 2010 | Millsaps College | Information Technology Services

Revised 8-8-09

For **Guests** of Millsaps Faculty, Staff, and Students

## Areas with Wireless Access

As the campus wide wireless plan nears completion areas will continuously be added to the list of active Hotspots. At this point connection to the wireless network is available in all academic, residential and instructional areas. Connection to the wireless can also be reached in athletic facilities, the Millsaps Bowl, and the Plaza, which is located adjacent to the Student Center and the HAC. For the most up to date availability list, visit <http://www.millsaps.edu/wireless>.

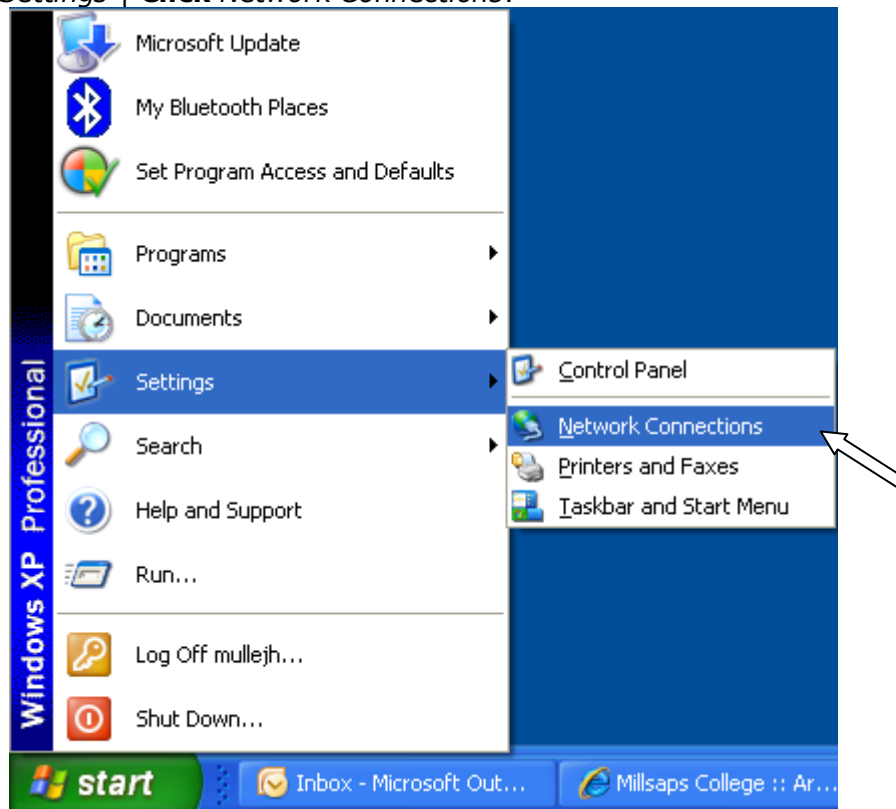
## Requirements for Access

You must have a computer equipped with an 802.11b/g-compatible wireless card and device's latest drivers.

The first two steps may be done anywhere. The last step must be completed while in a wireless enabled area.

## Step 1 – Enabling your Wireless card

Turn on your computer and make sure that the wireless card is activated. To do this **Select Start | Select Settings | Click Network Connections**.



In Network Connections, **Right-click** your *wireless card* | **Click Enable**.

## Step 2 – Setting up your connection to the Guest Wireless Network

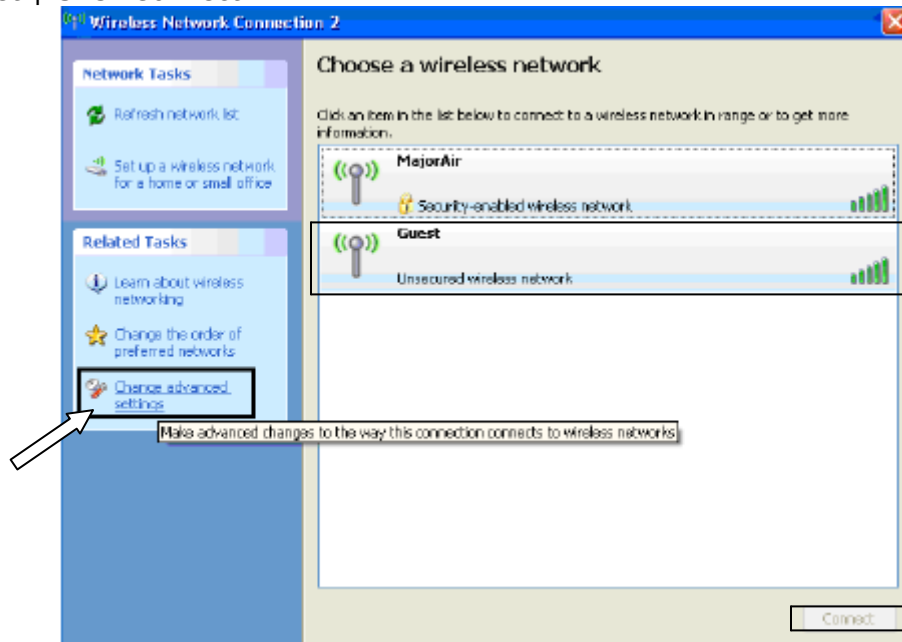
Notice the Wireless Connection icon in the bottom-right of the screen.



**Right-click** the *Wireless Connection* icon | **Click** *View Available Wireless Networks*.



**Click** *Guest* | **Click** *Connect*.



## Step 3 – Agreeing with the Millsaps College Policy for the Ethical Use of Computing Facilities

**Open** *Internet Explorer*.

Your browser will be automatically redirected to the Aruba login screen. Please take a moment to read the *Acceptable Use Policy*.

**Type** in your email address under *Guest User*.

Click *Log In*.

**REGISTERED USER**

USERNAME

PASSWORD

Log In

**GUEST USER**

EMAIL

Log In

Logging in as a guest user indicates you have read and accepted the [Acceptable Use Policy](#).

Welcome to Millsaps College.

**ARUBA**

After logging in as a Guest User you will receive conformation of successful authentication. This screen will automatically redirect you to your homepage in ten seconds.

#### **User Authenticated**

In 10 seconds you will be automatically redirected to <http://www.google.com/>.

Click [here](#) to go there directly.

Click [here](#) to bookmark this page.

For assistance, please call, email, or visit:

#### **HelpDesk at 601-974-1144, [HelpDesk@millsaps.edu](mailto:HelpDesk@millsaps.edu), or Academic Complex 105**

Support for Millsaps Faculty, Staff, Graduate Students, Commuter Students, and Guests  
Open Monday-Friday from 8am-8pm

#### **ResNet at 601-974-1899, [ResNet@millsaps.edu](mailto:ResNet@millsaps.edu), or New South Hall 125**

Support for On-Campus Undergraduate Millsaps Students  
Open Sunday-Thursday from 6pm-10pm and Friday-Saturday from 1pm-5pm